



 **AllViu 4.0**  
Next Level  
Visualization  
Platform



## Our Systems

### beVISION

Visualization System for Intuitive Operation and Notification

### beSECUR

Security Solution for Megayachts

### beWATCH

BNWAS – Bridge Navigational Watch Alarm System

### beSAFE

Vessel Safety Station

### beMOTION

Helicopter Approach Solution

### beENERGY

Vessel Energy Management System

## Next Level Visualization Platform

# AllViu 4.0

## beVISION

### Your Clear View on Board

As Chief Engineer, you know: safe and efficient ship operation depends on the availability and transparency of all technical information. This is exactly where AllViu beVISION comes in – the maritime alarm and monitoring system from besecke.

AllViu beVISION collects data from all relevant onboard systems – from power generation and distribution to propulsion, auxiliary systems, safety, monitoring – and presents it on one unified interface. At any time, you have a complete overview of your vessel's condition.

For more than 20 years, besecke has been equipping megayachts with tailor-made automation solutions. The world's largest and most prestigious yachts rely on the expertise of our engineers and the proven performance of AllViu beVISION.

### Your benefits on board

- Clear structure: All information is displayed in a logical, intuitive way – you instantly see what really matters.
- Fast reaction: Alarm management and prioritization help you make quick, well-founded decisions.
- Reliability: Developed for maritime operations – robust, stable and highly available.
- Flexibility: Adaptable to vessel type, fleet standards and your personal preferences – no overload, just the information you need.
- Proven in practice: Trusted by leading shipyards, captains and crews worldwide.
- Ahead of the competition: While other systems are often overloaded or rigid, AllViu beVISION offers an ergonomic user interface that reduces workload and increases efficiency.

**With beVISION you keep control – anytime, anywhere on board.**

**Your ship, your responsibility – Our technology for your safety and efficiency.**

## beSECUR

### Sophisticated Security Solution for Megayachts

The role of the Security Officer on board is critical: ensuring the protection of crew, guests, and the vessel against internal and external threats. This includes managing access rights, monitoring sensitive areas, detecting potential risks and coordinating effective responses in case of an incident.

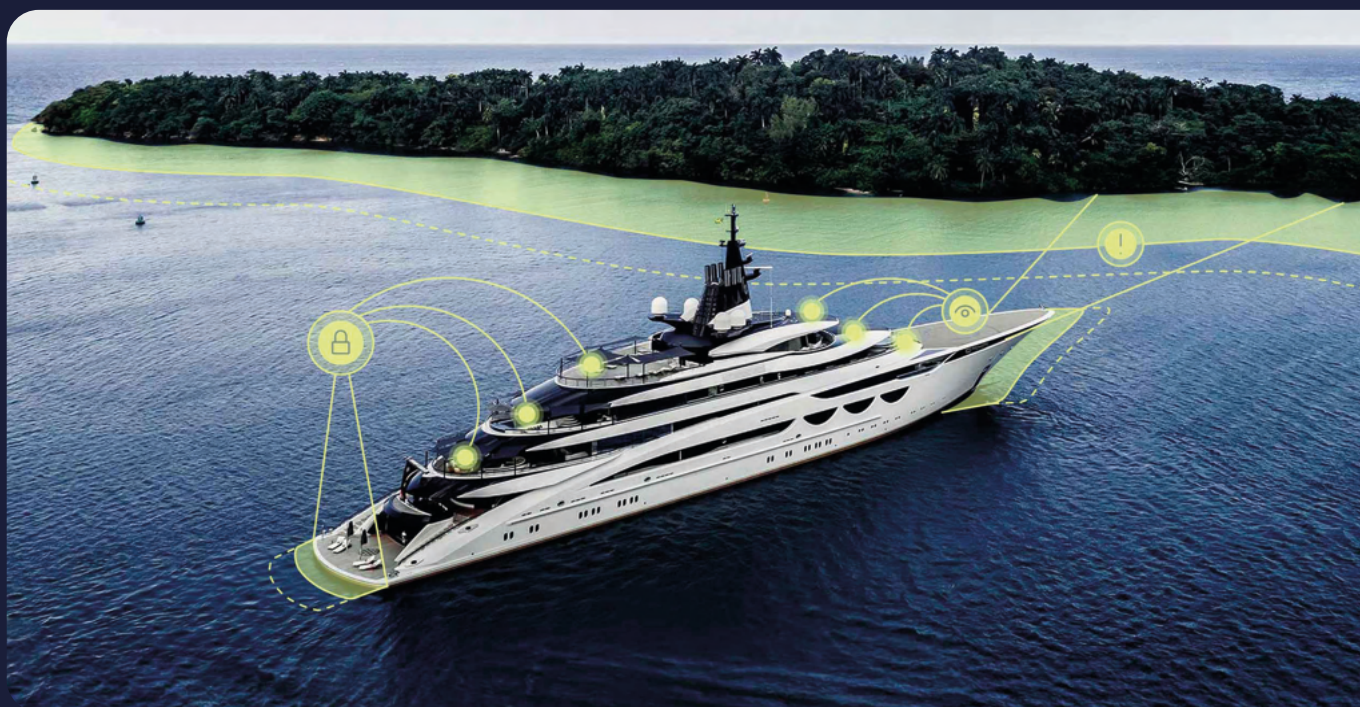
To perform these tasks efficiently, the Security Officer requires reliable tools that deliver clear, real-time information from all relevant subsystems.

↖  
**beSECUR is our flagship solution with a wide range of integration. It gives reliable warnings and supports the crew in decision-making.**  
↘

AllViu beSECUR provides exactly this. The system unifies multiple security domains into one consistent platform:

- Door Access Control (DACS): Administration of up to 500 doors with card readers, fingerprint scanners or PIN pads, including user management and long-term activity logs.
- CCTV Monitoring: Integration of IP cameras from various manufacturers, PTZ remote control, long-term recording, motion detection and alarm triggers.
- Perimeter and Intrusion Detection: Multisensor night-vision cameras, radar interfaces and anti-drone technologies ensure early threat recognition.
- Expandable Functions: Options such as underwater sonar for diver detection or tender tracking extend protection further.

For the Security Officer, this means streamlined workflows, prioritized alarms and consistent documentation within a single userfriendly interface. AllViu beSECUR reduces complexity and increases efficiency, allowing the Security Officer to focus on what matters most: safeguarding people, assets, and mission at sea.







## beWATCH

### Bridge Navigational Watch Alarm System (BNWAS)

- Designed to recognize accidents on the ships bridge
- Monitors the attention of the office on watch
- It automatically generates alarms if the OOW does not resets the system regularly
- MED Wheelmark approved solution
- Flexible system layout



## beMOTION

### Helicopter Approach Solution

- Integrated solution for yachts
- Graphical indication of roll, pitch and heel
- Turns landing lights
- Serial interface to HVLA
- Harmonious operating concept for all AllViu products makes it easy to use



## beSAFE

### Vessel Safety Station

- Individual created mimics with deck views
- Graphical indication of all fire zones, fire dectectors and dampers
- Display of watertight doors and hatches
- Ready to be integrated into beVision automation system



The AllViu visualization platform is used on most of our maritime software products to ensure a consistent operating concept.



## beENERGY

### Vessel Energy Management System

- Enhanced control of power management system
- Smart switching of consumers and groups
- Energy demand forecast
- Detailed event planning
- Optimized generator utilization
- Integration of alternative energy resources

# Enhanced Smart Features

## „Level of Detail“ Concept

### Turning Complexity into Clarity

Modern vessels generate an enormous amount of data. Thousands of measurement points, new energy technologies such as batteries, fuel cells and hybrid propulsion systems – all add complexity that can easily overwhelm operators.

AllViu 4.0 changes this with its Level-of-Detail approach: information is displayed exactly as needed – clear, structured and intuitive.

#### From Overview to Detail

- First view: Operators see only the most relevant parameters – the essentials, free from distraction.
- Zoom in: With a simple trackball movement or touch gesture, additional details appear step by step.
- Deep dive: At higher zoom levels, the system reveals comprehensive diagnostics of selected components.

This allows crews to seamlessly move from a high-level overview to granular insights – without switching interfaces or losing context.

#### Why it matters

The Level-of-Detail principle prevents information overload and ensures focus on what really counts. At the same time, it provides the flexibility to access any required depth of data within seconds.

#### The result

- Faster situational awareness
- Better-informed decisions
- Increased efficiency and safety on board

## Widget Concept

### Redefining Flexibility at Sea

Ship systems are complex – but their visualization doesn't have to be. With AllViu 4.0, every operator can design dashboards that match the vessel's exact operational needs.

#### Build your own dashboards

- Mimic editor: Create up to 100 customized mimic pages
- Comprehensive library: Charts, trends, alarms, text fields, live video feeds
- Dynamic adaptation: Spare inputs can be quickly integrated

Every crew member gets the tools to turn raw data into intuitive, task-specific views.

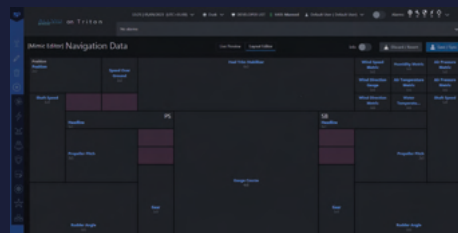
#### Automated synchronization

What makes AllViu 4.0 unique: any newly created or modified page is instantly distributed across the entire AllViu network. All operator stations stay perfectly aligned – real-time, consistent, effortless.

#### Why it matters

The Widget Concept gives the crew full control of their visualization. Complex ship operations become:

- Simpler: intuitive dashboards, tailored to tasks
- Smarter: instant updates across the network
- Safer: clarity and consistency for all operators



## Value Export Feature

### Connecting Shipboard Intelligence with Your Digital World

With AllViu 4.0, ship data no longer stays isolated. Instead, it becomes part of a broader digital ecosystem – enabling smooth interaction with third-party systems.

#### Automated data export

- Export selected datasets in CSV format
- Automatic intervals for continuous availability
- Ready for processing in external applications

#### Seamless integrations

- Transfer running hours directly into maintenance software
- Generate automated records of tank levels and other operational values
- Reduce manual input and eliminate duplication of work

#### Why it matters

The Value Export Feature connects onboard intelligence with the wider digital workflow. The benefits:

- Efficient: less manual effort, faster reporting
- Reliable: standardized data for external tools
- Future-ready: open for new applications and integrations



# Enhanced Trend Indicators

Seamless Data Logging  
Smarter Diagnostics

With AllViu 4.0, every critical measurement is continuously captured in a dedicated ring-buffered database. Weeks of detailed system history are preserved – ready to be analyzed whenever needed.

## From monitoring to diagnostics

- Trace back events step by step with precision
- Identify the root cause of irregularities
- Turn routine data into a powerful diagnostic tool

## Intuitive trend visualization

- Clear, dynamic graphics of all key values
- Easy comparison across multiple systems
- Anticipate potential challenges before they occur

## Why it matters

Enhanced Trend Indication gives crews more than just real-time values – it provides transparency, insight, and foresight. The result:

- Faster diagnostics
- Informed decision-making
- Absolute confidence in onboard technology



VISUALIZATION  
Bright Mode / Night Mode



# 3rd Party Integration

Redefining Integration  
at Sea

AllViu 4.0 turns integration into a seamless experience. Through its powerful API, data from external systems is unified into one intuitive platform – from CCTV and thermal cameras to forward-looking sonar and drone detection.

## Unified operations

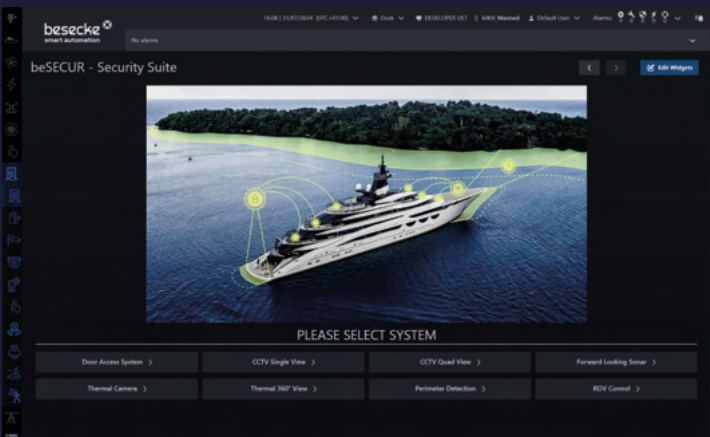
- Manage multiple technologies from a single interface
- Interconnect AllViu modules to create multifunctional workstations
- Simplify complexity while increasing efficiency

## Trusted compatibility

- Developed in close collaboration with leading maritime brands
- Guaranteed reliability and smooth integration
- Future-proof design for evolving requirements

## Why it matters

3rd Party Integration means more than connectivity – it creates clarity, efficiency and confidence. Crews gain full situational awareness while working with the world's most trusted technologies, all in one place.



# On Duty-Functionality

One Platform  
Total Control

AllViu 4.0 brings clarity to alarm management by uniting up to five independent alarm systems into one harmonized setup. Critical alerts are routed exactly where they need to go — ensuring maximum awareness with minimum distraction.

## Targeted alarm distribution

- Bridge, Engine Control Room, or Security Office – alerts reach the right station
- Intelligent separation of signals: measured values vs. critical alarms
- Clear prioritization for faster response

## Integrated safety features

- Certified Wheelmark BNWAS for bridge operations
- Duty Alarm setup for Unmanned Machinery Space (UMS) compliance

## Emergency Take-Over

In contingency scenarios, AllViu provides a built-in Emergency Take-Over function – ensuring that full command of onboard systems remains guaranteed at all times.

## Why it matters

On Duty Functionality prevents alarm overload and delivers reliability, safety, and confidence to every operational area. The crew sees only what is relevant — and knows they can rely on the system, even in emergencies.

# Alarm Indication

Instant Awareness  
Effortless Navigation

AllViu 4.0 ensures that critical information is never out of sight. Incoming warnings and alarms are presented in the status bar — both as intuitive icons and clear text — providing instant awareness without distraction.

## Direct access with Goto Mimic

- Jump straight to the relevant mimic page with one click
- No searching through menus, no wasted time
- Immediate context for faster reactions

## Comprehensive alarm history

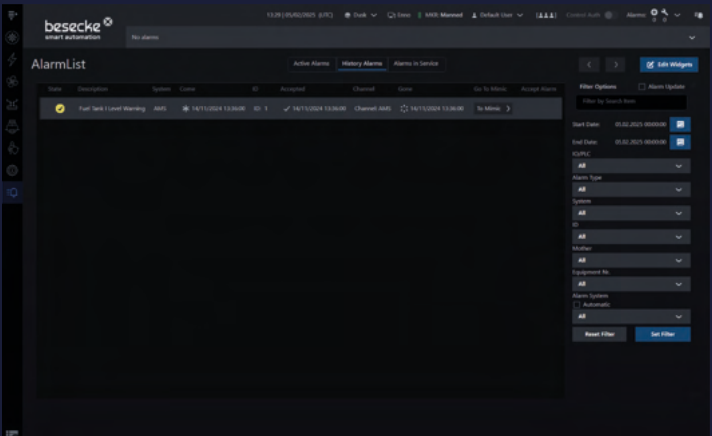
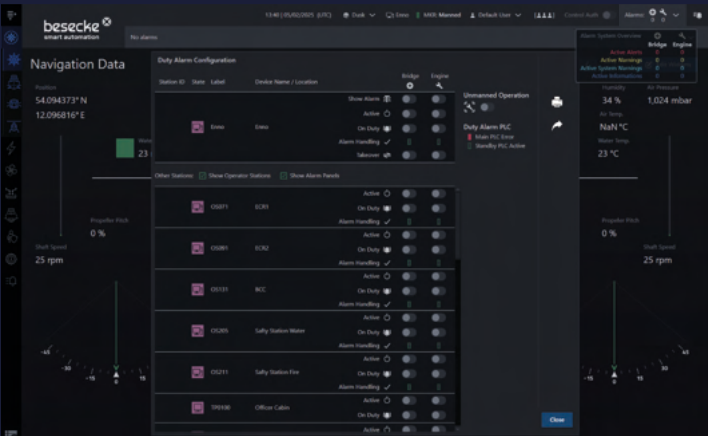
- Timestamped log of all alarms and clearances
- Filterable by system, alarm type or PLC number
- Identify temporal patterns and correlations with ease

## Service Mode for maintenance

- Suppress repetitive alerts during service work
- Keep operations smooth and uninterrupted
- Reinstate alarms instantly when maintenance is complete

## Why it matters

Instant Awareness delivers clarity, efficiency, and confidence. Crews gain immediate insight into every situation — with streamlined navigation and tools that keep focus exactly where it belongs.





## besecke

### Smart Automation & System Technologies

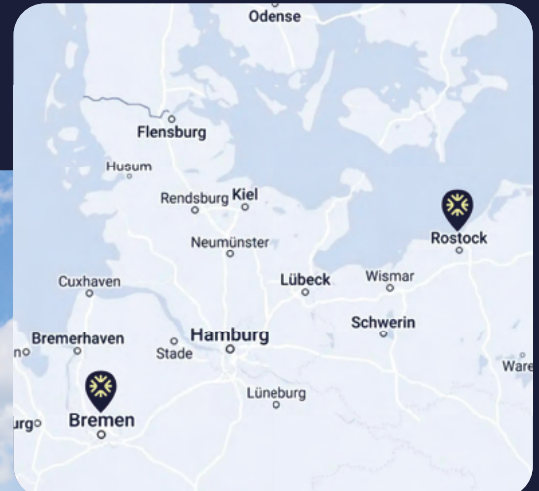
Flexible, precise, efficient and transparent – that's how our automation and systems technology can be described in a nutshell. For decades, we at besecke GmbH & Co. KG have been developing tailor-made solutions for customers all over the world. Our claim: technology that works reliably and perfectly suits your requirements.

We place particular emphasis on maritime systems – from energy supply to ship automation. We also implement industrial automation solutions for the food, automotive and special machinery industries.

Our approximately 180 employees work in an interdisciplinary manner and accompany you through all project phases – from detailed planning to commissioning and beyond.

We offer not only complete systems, but also service and support during ongoing operation. Thanks to our independence in the choice of components, we use exactly the technologies that are best suited to your application – manufacturer-independent, innovative and future-proof.

Whether it's a single project or a complex overall system: with besecke, you are choosing a partner who combines technology with experience and passion – and makes your vision a reality.



#### Locations

##### besecke GmbH & Co. KG

Steindamm 24  
D – 28719 Bremen

Tannenweg 22k  
D – 18059 Rostock

In everything we do, we seek the smartest solution:

**minimum Input, ➔  
maximum Impact.**

#### Contact

Tel: +49 421 636 98 0  
Fax: +49 421 636 44 12  
Mail: [kontakt@besecke.de](mailto:kontakt@besecke.de)

